



Intermodal Logistics Center



Why Are We Here?

- In 2007, the container trade in North America totaled 29,530,027 TEU's
- By 2015, the container trade in North America is expected to increase to 72,000,000 TEU's

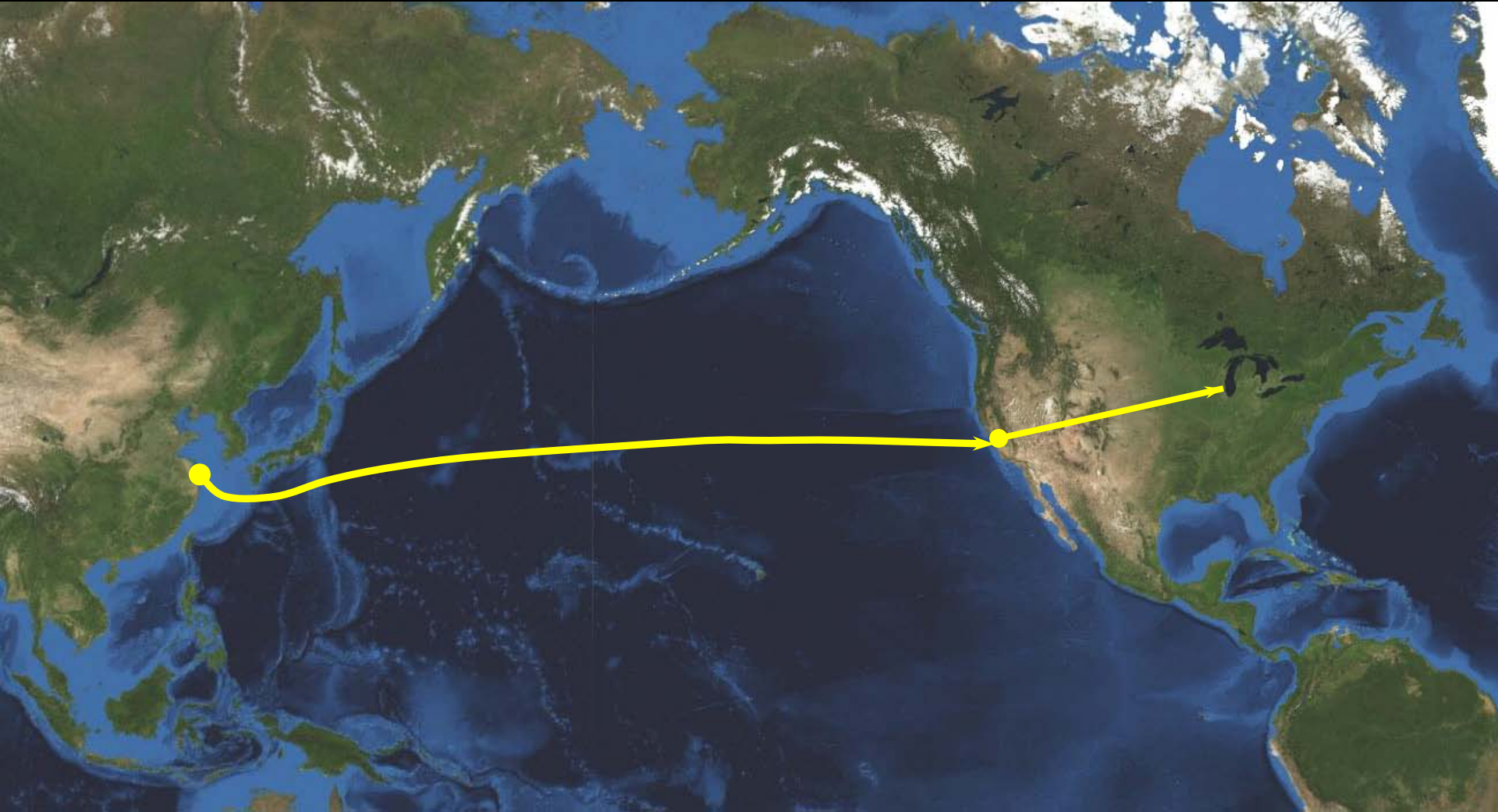


Global Trade - 2009



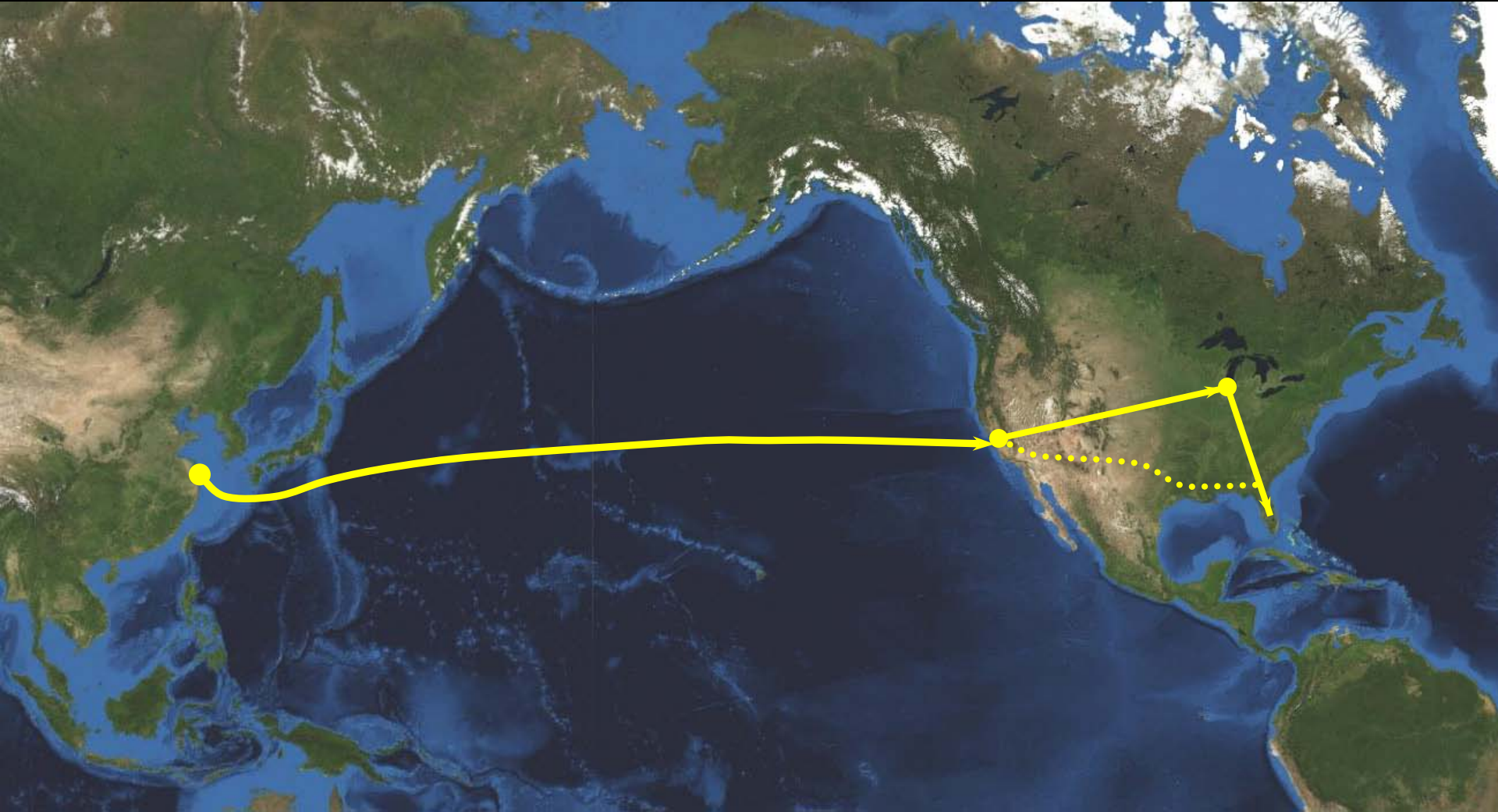
13 Day's

Global Trade - 2009



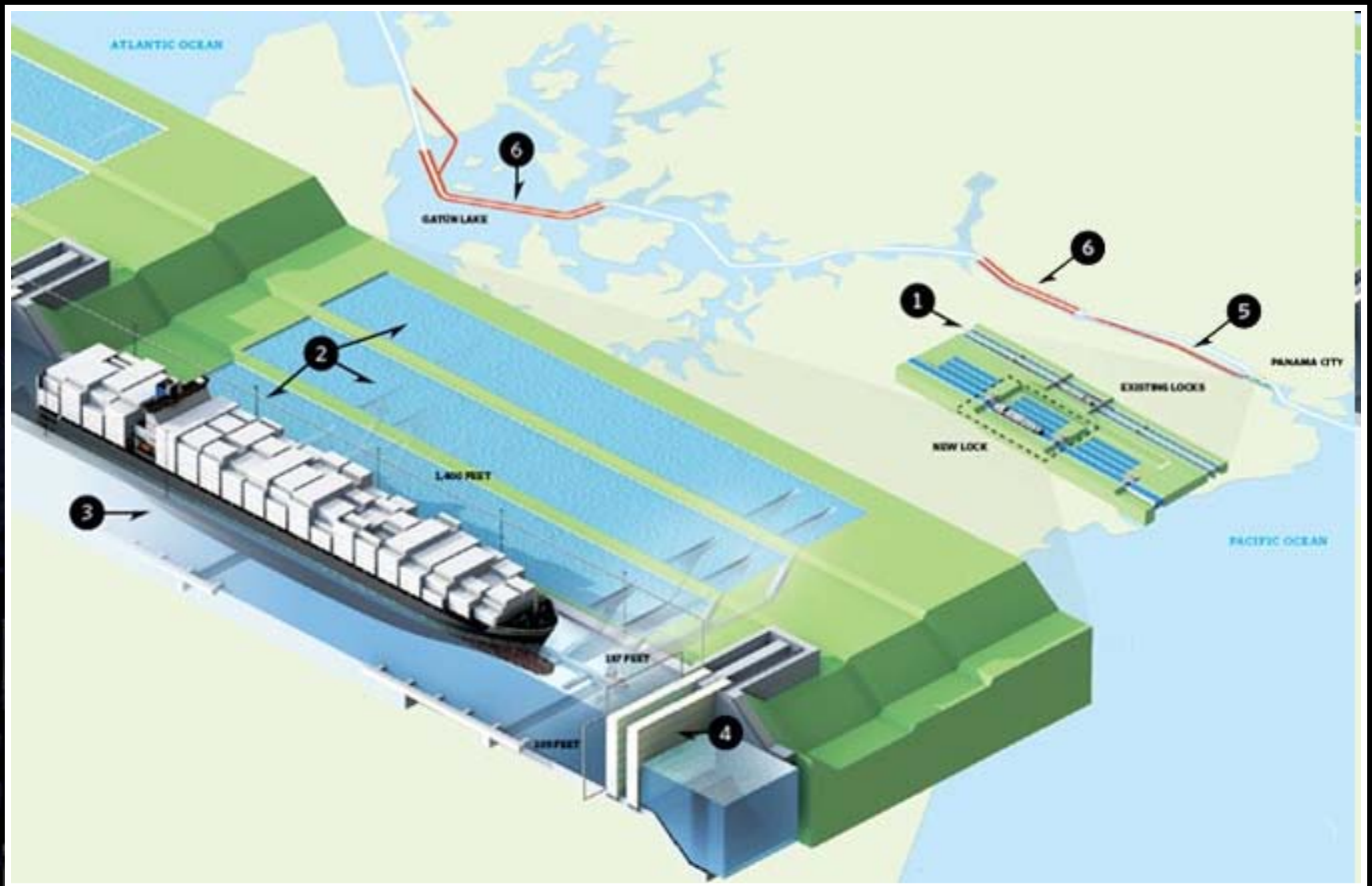
13 Day's + (1) + 5 Day's

Global Trade - 2009

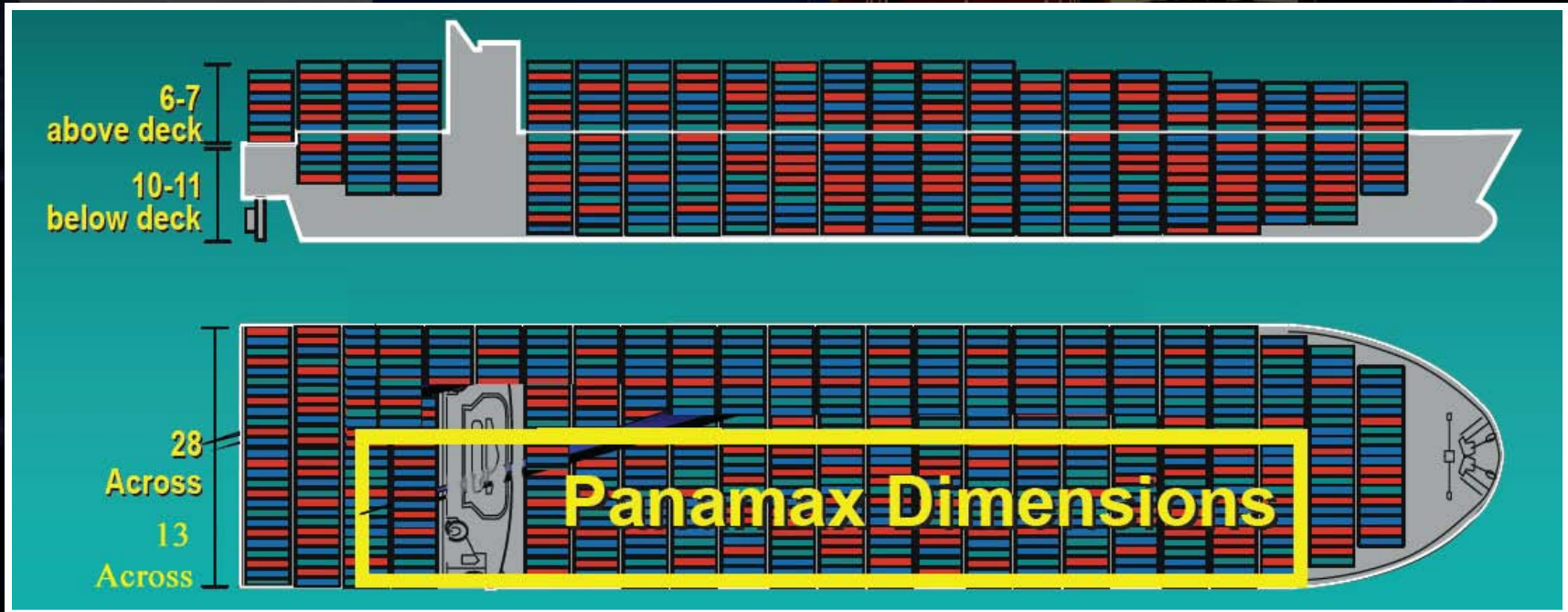
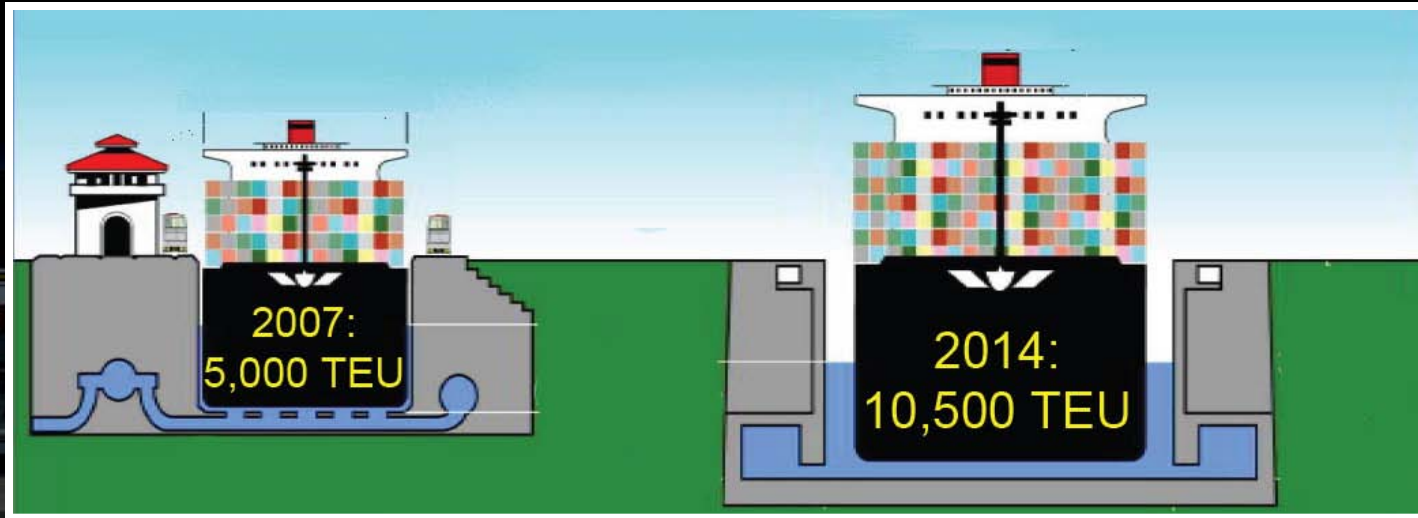


13 Day's + (1) + 5 Day's + (2) + 4 Day's = 25 Day's

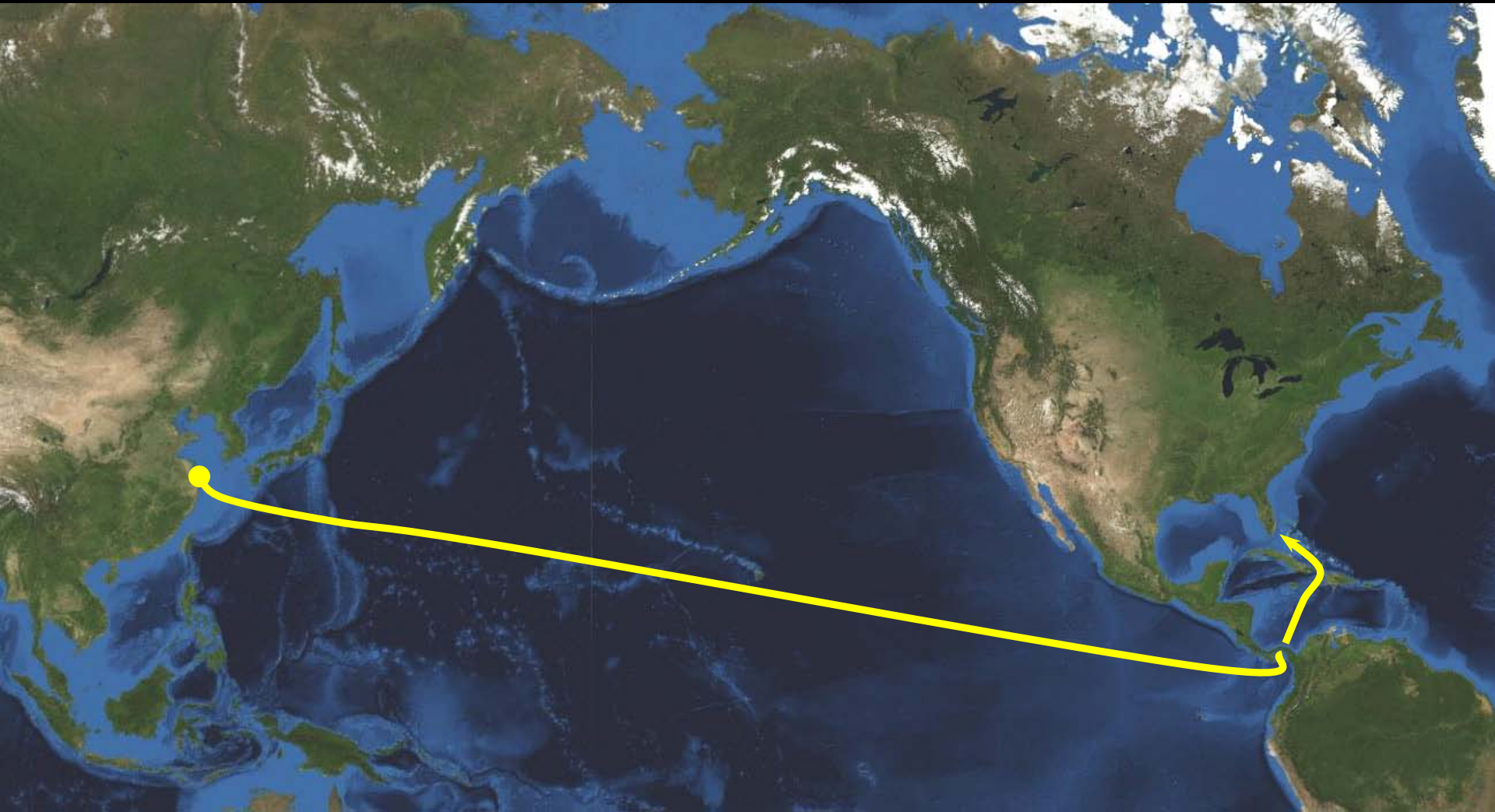
Panama Canal - 2014



Size Matters

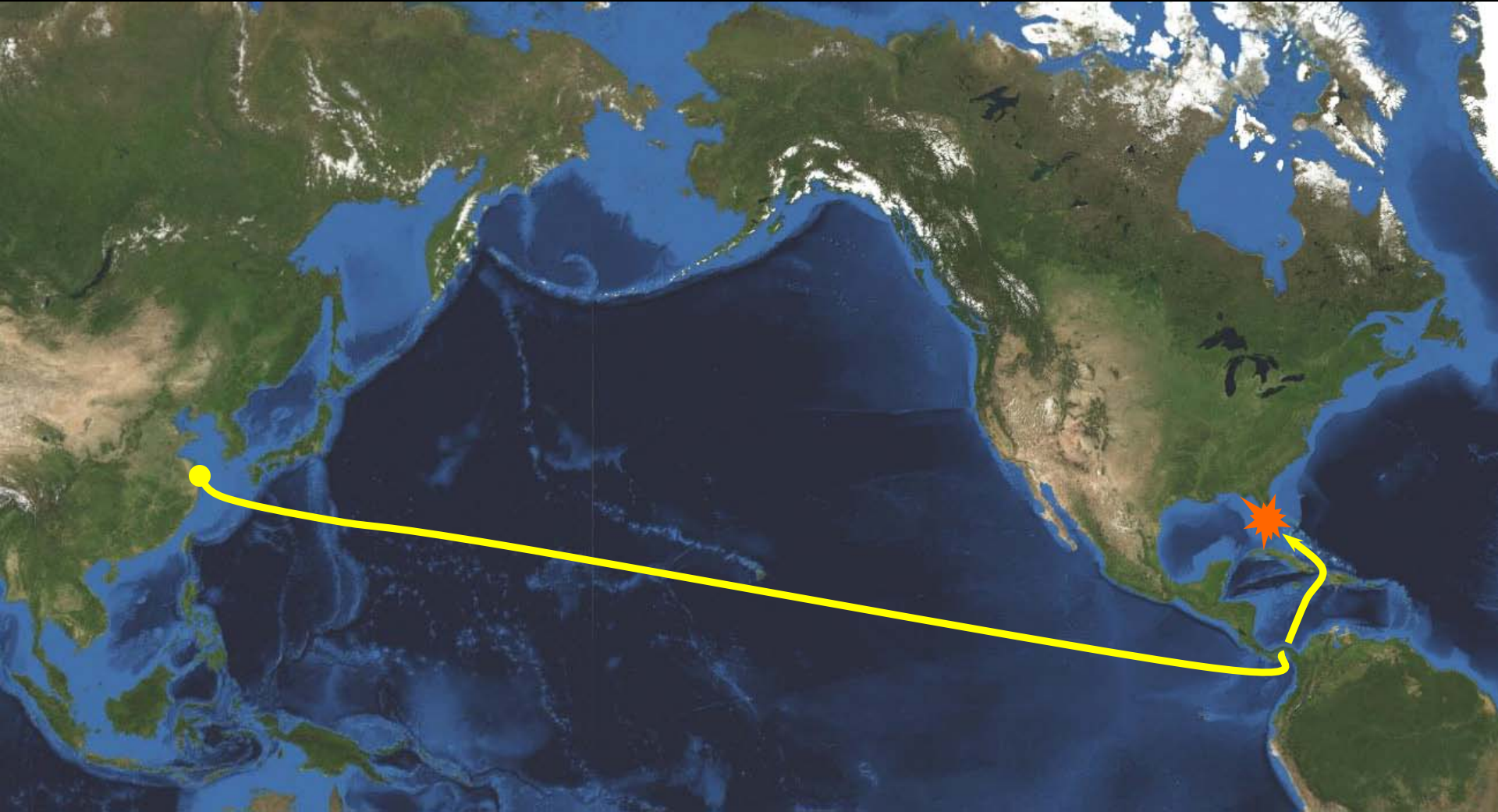


Global Trade - 2014



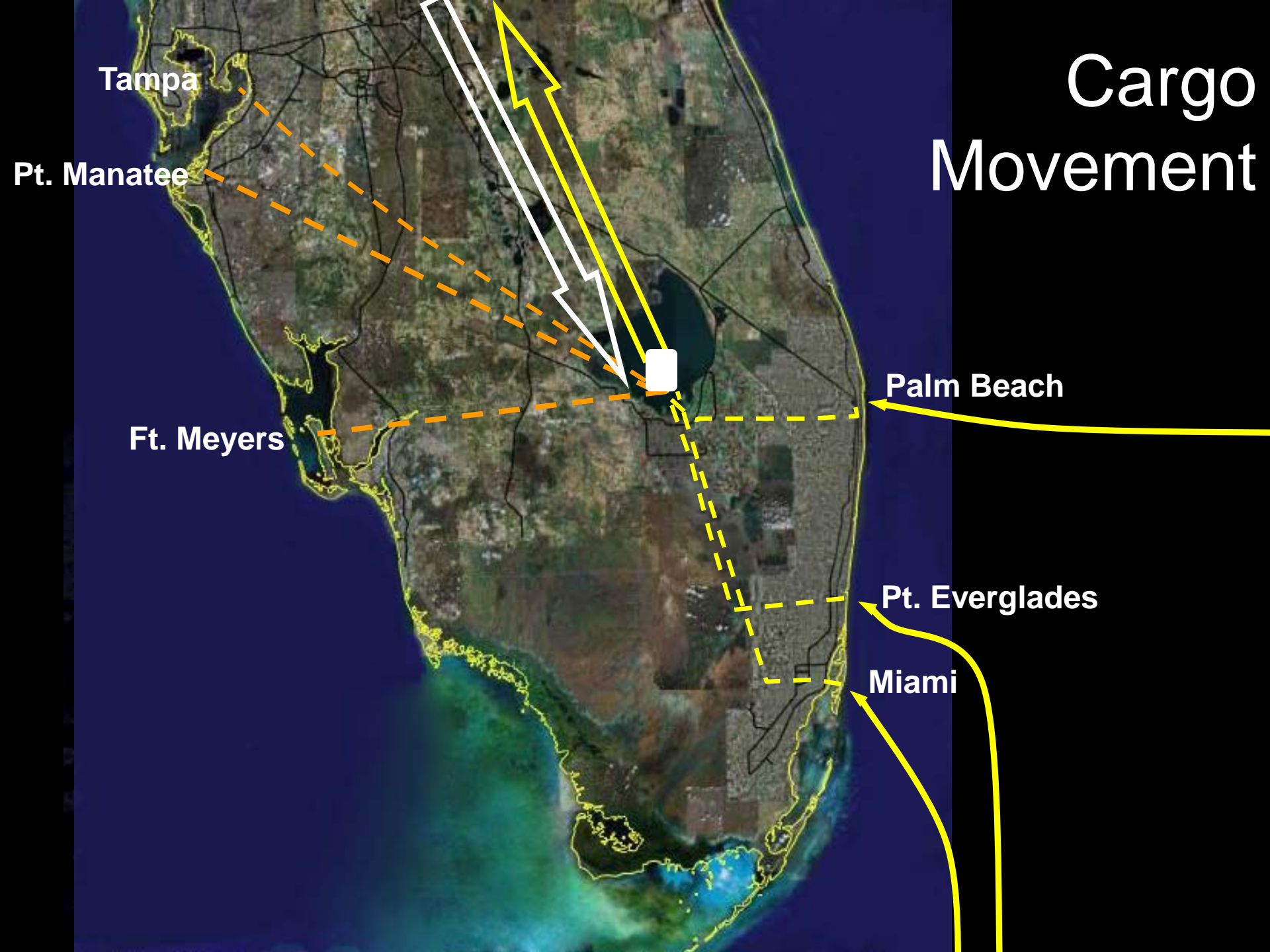
23 Day's

Global Trade - 2014



23 Day's + 1 Day = 24 Day's

Cargo Movement



Tampa

Pt. Manatee

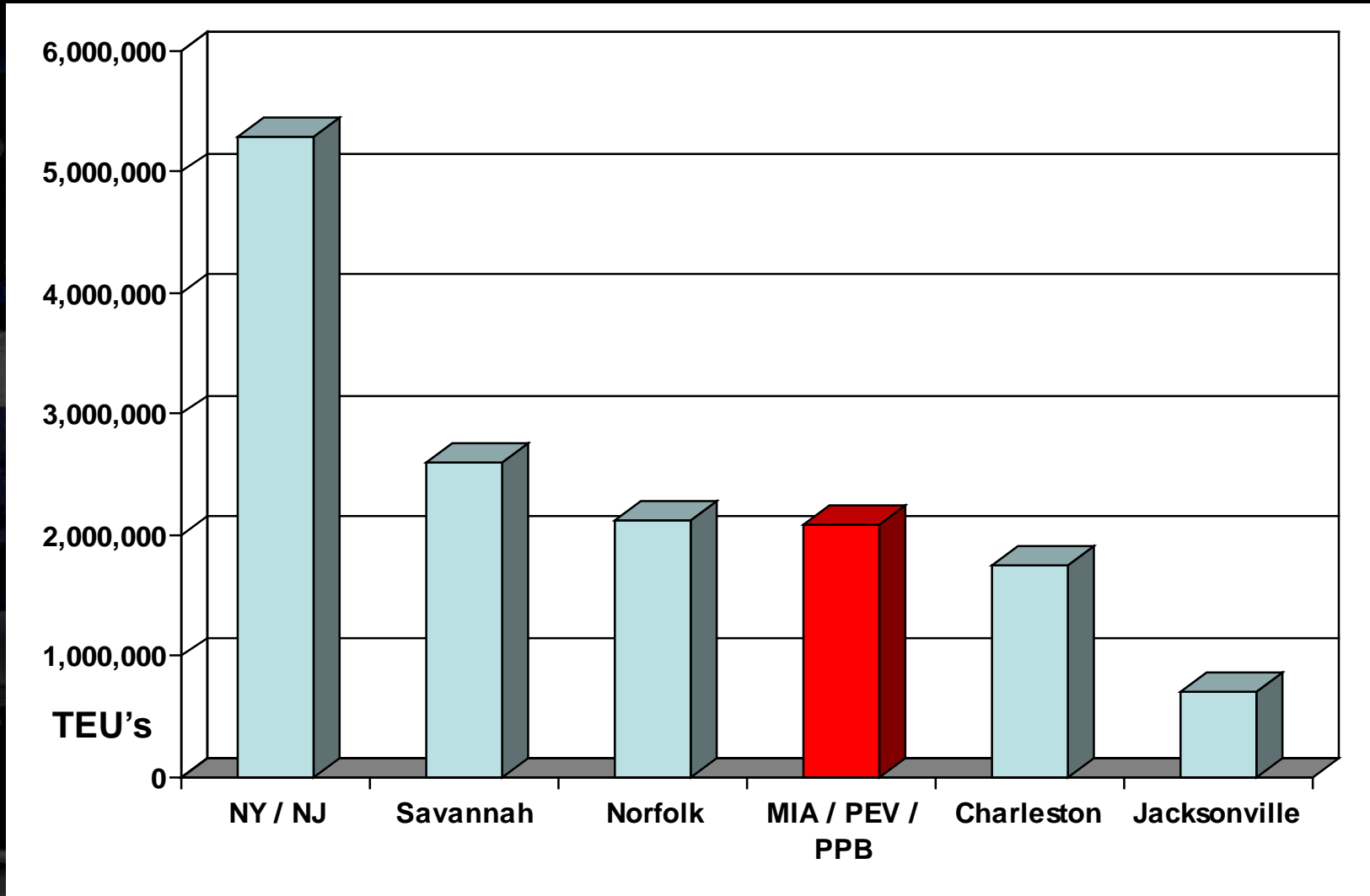
Ft. Meyers

Palm Beach

Pt. Everglades

Miami

East Coast Container Volumes



Congestion



Port of Palm Beach

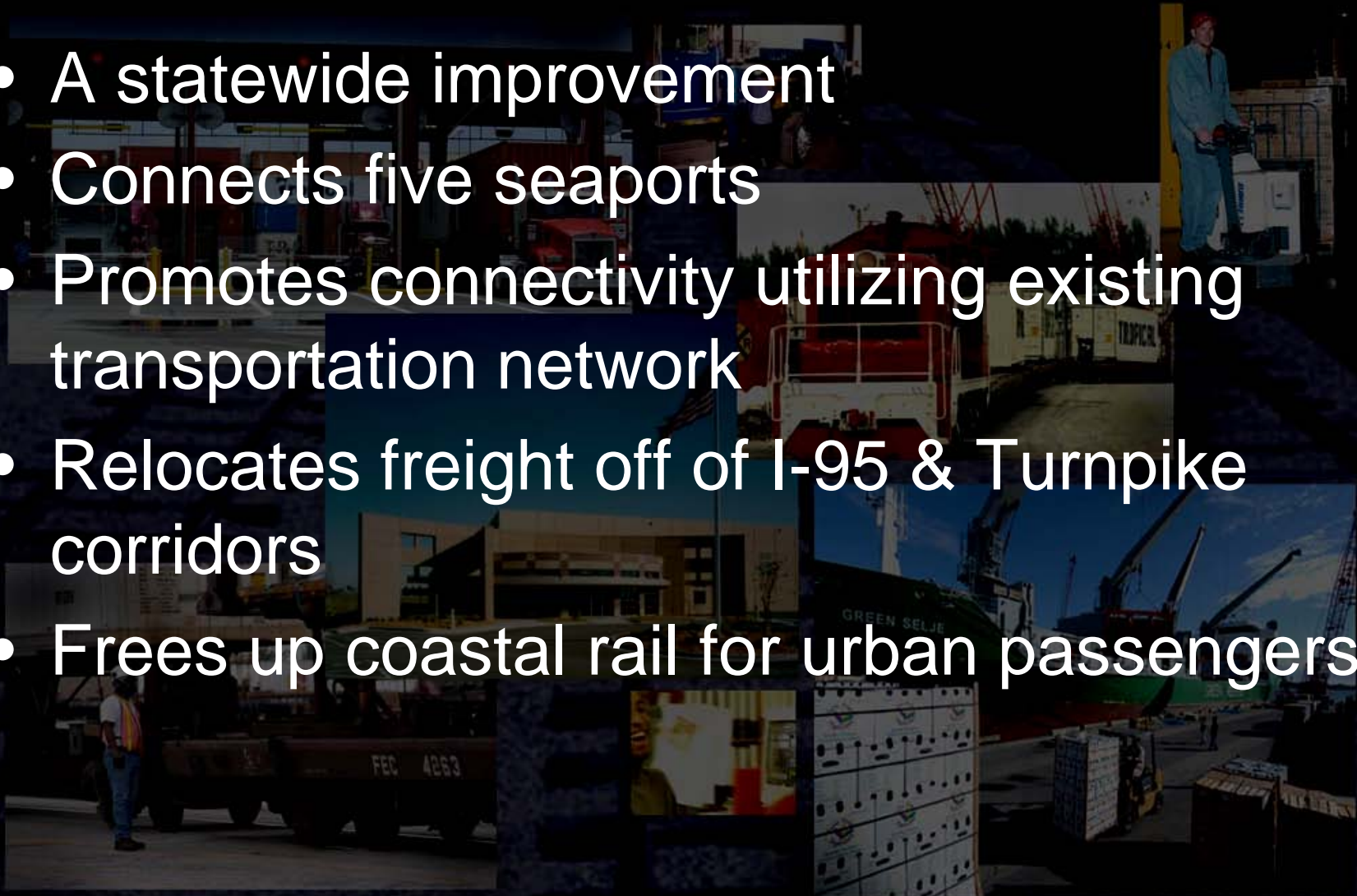


Port of Miami



Regional Approach

- A statewide improvement
- Connects five seaports
- Promotes connectivity utilizing existing transportation network
- Relocates freight off of I-95 & Turnpike corridors
- Frees up coastal rail for urban passengers



Virginia Inland Port

- **Economic Engine for the Commonwealth of Virginia**
- **Opened in 1989**
- **24 Major Companies Have Located Near VIP**
 - Investment of Over \$599 Million
 - Over 6 Million SF of Building
 - Employment of Over 7,000





Family Dollar Service

Ferguson Enterprises

Stephens Industrial Park

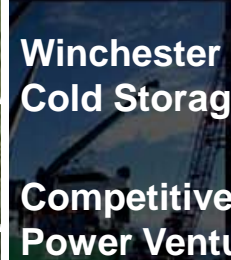
Toray Plastic

DuPont

Winchester Cold Storage

Competitive Power Ventures

Roanoke Cement



Cedarville Enterprise Zone

Baugh NE Cooperative

Virginia Inland Port

Warren Industrial Park

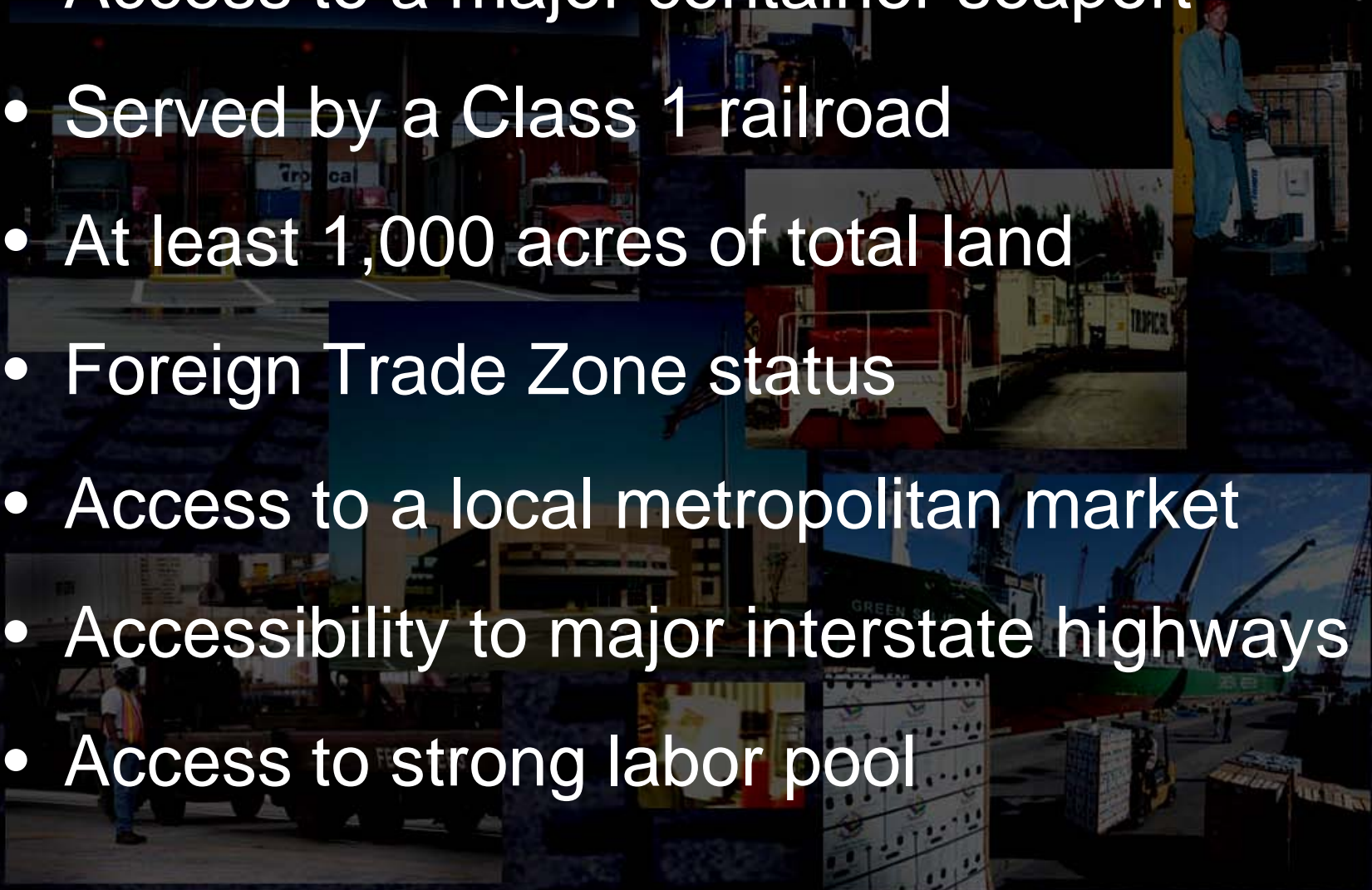
Valley Redi-Mix

Riverton Commons Commercial Center



Inland Port Components

- Access to a major container seaport
- Served by a Class 1 railroad
- At least 1,000 acres of total land
- Foreign Trade Zone status
- Access to a local metropolitan market
- Accessibility to major interstate highways
- Access to strong labor pool



Transportation Network

Tampa
Pt. Manatee

Palm Beach

Pt. Everglades

Miami

ROADS

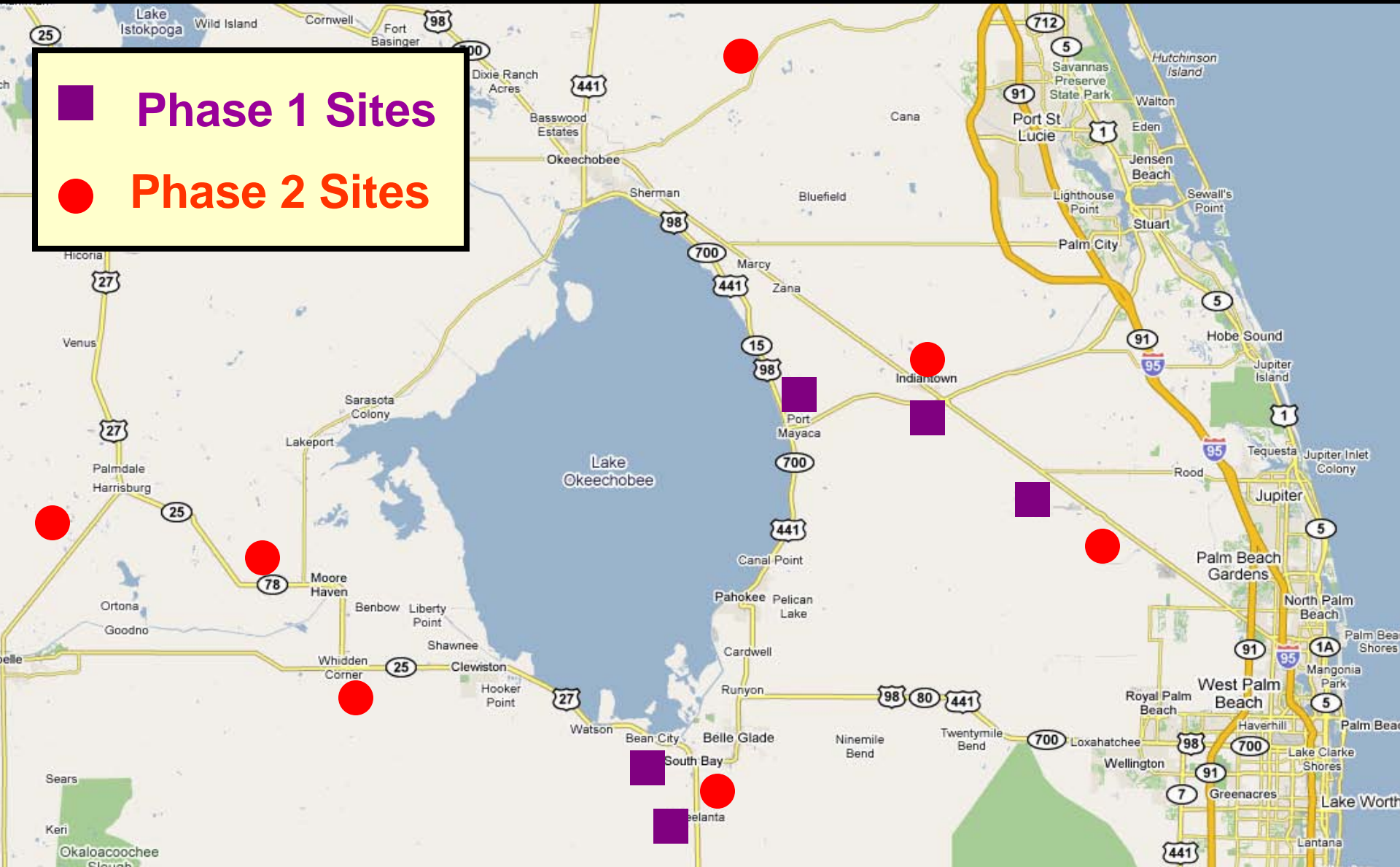
RAIL



Potential Inland Port Sites

Phase 1 Sites

Phase 2 Sites



Intermodal Logistics Complex

- There is approximately 515 million square feet of warehouse and distribution space in Florida



Intermodal Logistics Complex

- There is approximately 515 million square feet of warehouse and distribution space in Florida
- By 2025, studies suggest that there will be a demand for 40 to 80 million sq ft of additional distribution space in South Florida alone



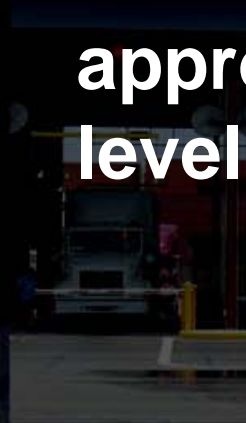
Intermodal Logistics Center

- 50 million sq ft of distribution center would require approximately 3,200 acres of land



Intermodal Logistics Center

- 1 million sq ft of distribution center employs approx. 300 - 900 people, depending on the level of automation



Who Is Involved?

- Port of Palm Beach
- Florida DOT
- Other South Florida Ports
 - Port of Miami
 - Port Everglades
- Railroads
 - SCFX, CSX, FEC
- Private land owners/developers



Where Do We Go From Here?

- Determine private sector interest
 - Develop general project description material
- Evaluate options
- Move forward with Request for Proposals (RFP)
- Select ILC Site
- Enter into agreement with selected partner(s)



